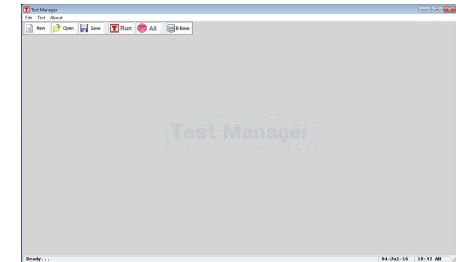




Define and maintain Functional or Stress Tests, run and monitor them and take advantage of the Archiving Utility that enables the storage and reuse of parts of already run Scenarios, for future use.

FlexiTester

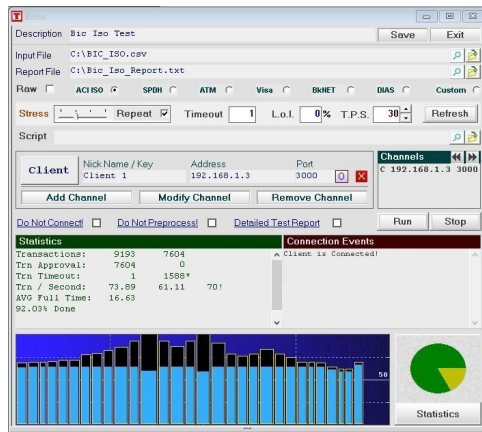


34 Vasilissis Amalias Ave.

Athens 105 58, Greece

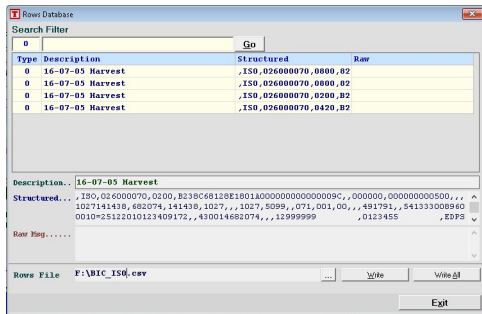
Test Engine

A user completes a rather short form that describes the Test Scenario and then Run the Test.



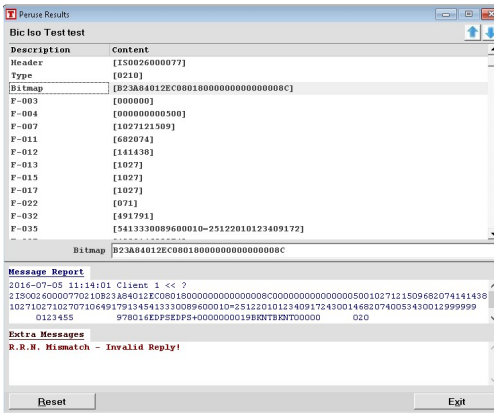
Rows Database

Whenever there is the need to repeat a set of transactions -as is or with minor changes- the Transaction Archiving utility may prove very useful.



Reporting

Reports contain all information related to events during the current -or just finished- run.



When the Detailed Test Report checkbox is checked, messages are analyzed and displayed field by field for Message Analysis.

Multiple Protocols supported

Natively supported categories are BIC ISO, SPDH, Visa, BankNet, DIAS, and ATM Test or a Custom Test.

Scripting support

In the case of a Custom scenario, a Script File is also necessary to contain the logic of a test that is not already handled "natively" by the System.

Input Files

Input File is a valid Transaction Rows File. This file may be as simple as containing plain lines of actual Message content to be sent (normally ".txt" type) or more elaborate Message Structures that will perform a great deal of work necessary upon being read. (".csv", ".log" or ".trc").

Message Types

Messages can be Raw or Structured. They must also belong to either one of the Native types or be Custom ones. Native Types are BIC ISO, SPDH, ATM, Visa and BankNet each being supported by a handler that will format messages in a manner appropriate to the involved message handler in the Host System.

For more information about the FlexiTester, you can find us at :

34 Vasilissis Amalias Ave.

Athens 105 58, Greece

Or you can send us an email to :

support@epscl.gr