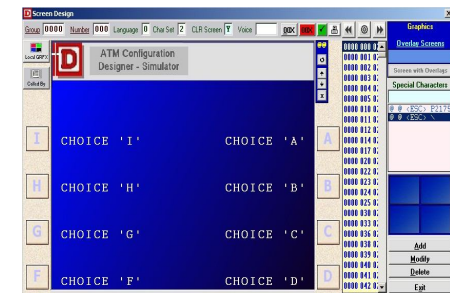


An EPSCi's approach to designing Configurations for NCR, Wincor, Diebold ATMs by means of a Graphical User Interface.

ATM Configuration Designer

Version 4 - SQL



34 Vasilissis Amalias Ave.

Athens 105 58, Greece

EPSCI S.A.

ATM Configuration Designer

Different Functions of the ATM Configuration Designer

The main functions of the application are separated accordingly in the Pull-Down Menu Headers, the Toolbar and the large labeled Module Buttons. The program is currently available in two flavors:

NDC 4.0, supporting 4 different formats: NDC+, Wincor and the Language-1000 counterparts of these. Differences concern mostly the EMV section and the Language support of the Screens section, and are well taken into consideration.

Diebold ATM 3.0, supporting the Diebold format. With some expectable minor differences between them, they operate in all but identical fashion.

Windows Based Program

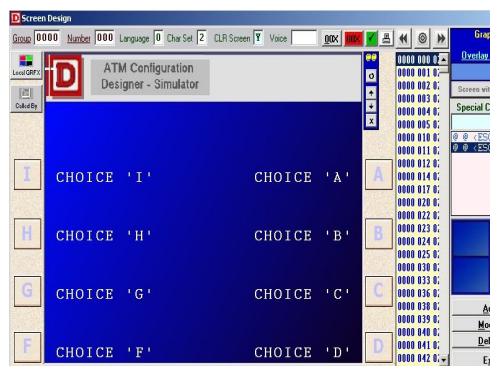
ATM Configuration Designer is a Windows based program conforming to most of the established conventions of such. It is menu and button driven in such a way, that almost all of its functions may be activated by a variety of mouse and keyboard operations.

Graphical User Interface

ATM Configuration Designer is slightly oriented towards Full Screen Graphics, as opposed to Text Screens, facilitating fully graphical approaches. It may handle, however, All-Text Screens, providing for Character Set Conversions, thus requiring only minor concern by the user, since translation is performed automatically. Each Configuration may come with its very own Graphics directory and Picture types.

Designing Screens

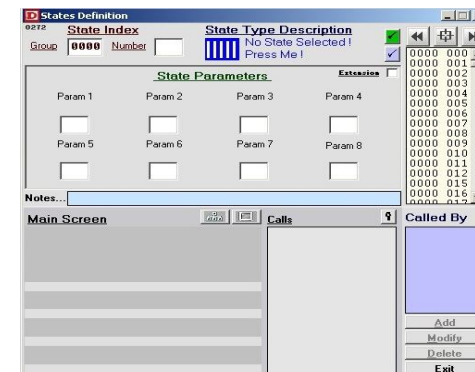
You can design screens easily. The Screen Design Window looks like this:



Define states

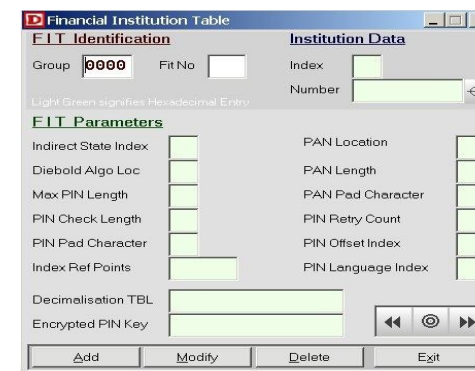
You can define states the easy way in the

State Definition Screen that looks like this:



Input F.I.Ts

The Input F.I.Ts window looks like this:

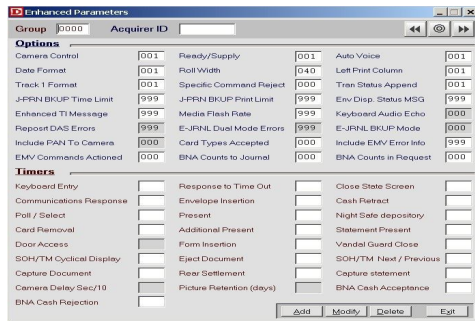


The user must provide two key field values that uniquely identify each Financial Institution Record, namely **Group** and **F.I.T No**, and then fill in the rest of the values that are necessary to introduce a F.I.T., as requested by the NDC Protocol.

ATM Configuration Designer

Enhanced Configuration Parameters

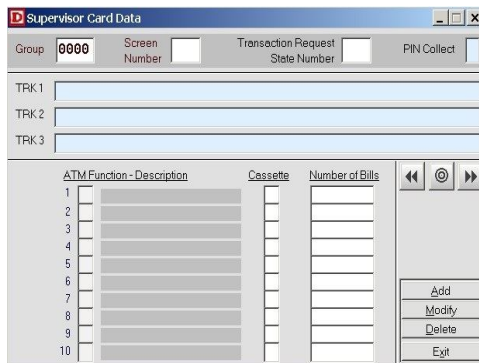
The Enhanced Parameters window looks like this:



This editor enables the input of values for the Enhanced Configuration fields, to be subsequently downloaded to the ATM.

Supervisor Card Data

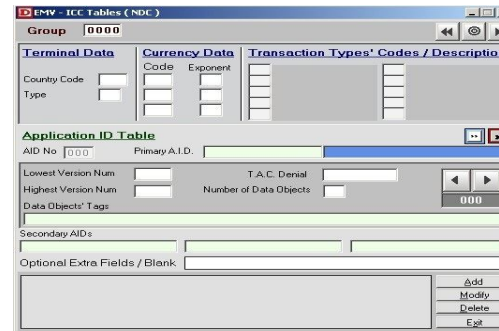
The Supervisor Card Data Window looks like this:



This editor enables the input of values for the Supervisor Card Data fields, to be subsequently downloaded to the ATM.

EMV-ICC Tables

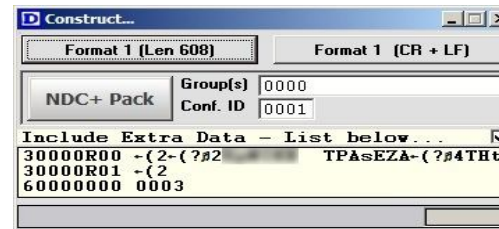
The NDC Standard EMV-ICC Tables window is displayed below:



This editor enables the input of values for the EMV Configuration fields, to be subsequently downloaded to the ATM.

Construct

The Construct dialog looks like this:



It will be displayed once the User has chosen the name of the file to be created.

Connects to any Database

You can import data from external sources, to form a Configuration that is stored in SQL Tables. ATM Configuration Designer connects to any database you want as SQL, Oracle, access file, etc.

Last but not Least

You can see the whole schematic environment where you can represent a full top down configuration and save it in a jpg file. A New Configuration may also be started from scratch. It continues with editing, "scrutinizing", enhancing and simulating this Configuration in a Windows Environment. It ends with constructing a file that will be downloaded to the ATM or moved to another system, in a suitable format.

For more information about the ATM Configuration Designer or even purchase the product, you can find us at :

34 Vasilissis Amalias Ave.

Athens 105 58, Greece

Or you can send us an email to :

support@epsci.gr